



Utility Safety - Gas/Propane

“Safety” videos: www.youtube.com/user/EMDPrepare

Natural Gas:

Natural gas leaks and explosions are responsible for a significant number of fires following any major earthquake. It is vital that all household members know how to shut off the natural gas.

Preparing to shut off the natural gas:

- Locate the shut-off valve (see illustration). Make sure this valve will turn. To shut off the gas, turn the valve 90° or 1/4 turn, so that it crosses the pipe (see illustration).

If your valve is rusted open, do not put WD-40™ lubricant on it. It may corrode the O-rings that allow the valve to turn.

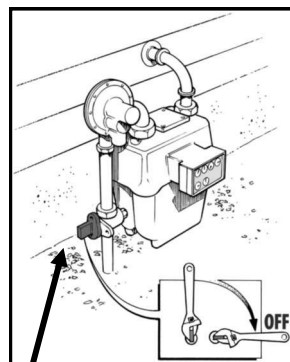
- Attach a wrench to the meter or to the wall directly behind the meter.



- Choose a crescent wrench that is at least 12" long.
- Adjust it to fit your valve before hanging it behind the meter in case it rusts.

Shutting off the gas after an earthquake:

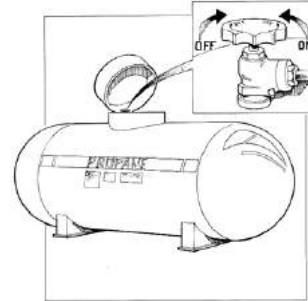
- Shut off the gas immediately only if you smell the characteristic odor of gas, you hear a hissing sound, and/or you notice the meter dials spinning more rapidly than normal.
- Do not use matches, lighters, open flame appliances, or operate any electrical switches until you are sure no gas leaks exist. Sparks from electrical switches could ignite the gas.
- If you smell natural gas, immediately get everyone out of and away from the house. Open the windows and doors to provide ventilation. Shut off the gas at the meter.



The shut-off valve is located on the pipe that comes out of the ground.

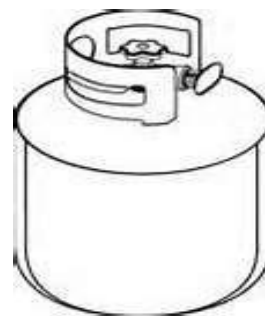
Propane:

- Have your home's propane tank properly installed by a qualified professional and serviced on a regular basis.



Propane Tanks: (portable)

- Do not store tanks in a building, garage, or enclosure.
- When not connected for use, keep tank valve turned off.
- Propane tanks are extremely flammable.
- When transporting your tank, put it in a secure well-ventilated location in your vehicle. Tank should be upright with valve turned off. Tank should be taken directly to and from place of use. Do not leave unattended in any vehicle.
- Do not use portable propane heaters, stoves, or lanterns in tents, campers, truck caps, RVs, or other unventilated enclosures, especially while sleeping.
- Never store a spare tank beneath a grill.
- Always store tanks upright.
- Never store a tank in temperatures of 125F degrees or more.
- Never use or store a propane tank indoors.
- Do not try to repair a damaged tank or tank valve.



Utility Safety
Natural Gas / Propane



WASHINGTON MILITARY DEPARTMENT
Emergency Management Division
Camp Murray, WA 98430-5122

Web site: www.mil.wa.gov/emergency-management-division 253-512-7000;
(800) 562-6108

(Utility Safety continued on next page)



Utility Safety - Electricity/Water

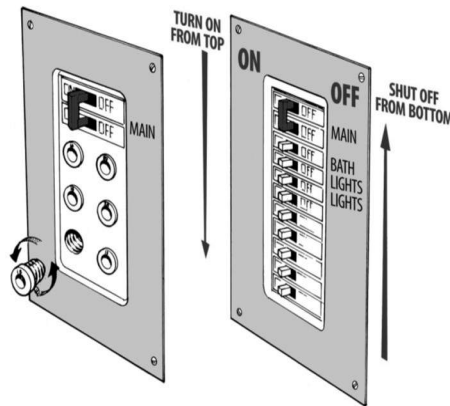
“Safety” videos: www.youtube.com/user/EMDPrepare

Electricity:

Electrical sparks have the potential of igniting natural gas if it is leaking. It is wise to teach all responsible household members where and how to shut off the electricity.

Preparing to shut off electricity:

- Locate your electricity circuit box.
- Teach all responsible household members how to shut off the electricity to the entire house.

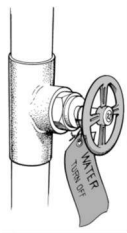


FOR YOUR SAFETY: Always shut off all the individual circuits before shutting off the main circuit breaker.

- Check your electrical panel to make sure the breakers and fuses are properly rated for the circuit that they are protecting.
- If an appliance repeatedly blows a fuse, trips a circuit breaker or gives you an electrical shock, immediately unplug, repair or replace it.
- Check the cords of appliance in your home as well as the plugs and connectors. Make sure they are not frayed, cracked or damaged, placed under rugs or carpets, resting on furniture, or located in high traffic areas.
- Do not nail or staple cords to walls, floor, or any other objects.
- Inspect all outdoor connections, appliance, and tools for frayed cords, broken plugs, and cracker or broken housings.

Water:

Water quickly becomes a precious resource following many disasters. It is vital that all household members learn how to shut off the water at the main house valve.

- Cracked lines may pollute the water supply to your house. It is wise to shut off your water until you hear from the authorities that it is safe for drinking.
- The effects of gravity may drain the water in your hot water and toilet tanks unless you trap it in your house by shutting off the main house valve (not the street valve in the cement box at the curb – this valve is extremely difficult to turn and requires a special tool).
- Locate the shut-off valve for the water line that enters your house. It may look like this: 
- Make sure this valve can be completely shut off. Your valve may be rusted open or it may only partially close. Replace it if necessary.
- Label this valve with a tag for easy identification, and make sure all household members know where it is located.



Utility Safety
Electricity / Water



WASHINGTON MILITARY DEPARTMENT
Emergency Management Division
Camp Murray, WA 98430-5122

Web site: www.mil.wa.gov/emergency-management-division
253-512-7000; (800) 562-6108